



# MC-331 Transport Trailer



## BUILT FOR A LIFETIME OF SAFE & RELIABLE USE

Countryside Tank's MC-331 Transport Trailer has been constructed in full accordance with the latest requirements of American Society of Mechanical Engineering Code, NFPA Pamphlet 58 and DOT Specification MC-331.



### **SPECIFICATIONS:** Capacities Available:

- 9,600 Gallons
- 10,600 Gallons
- 11,500 Gallons
- 12,600 Gallons
- 13,500 Gallons
- 14,400 Gallons
- 14,500 Gallons
- 15,200 Gallons

*Specifications subject to change. Other options available upon request.*

## **COUNTRYSIDE**

• TANK COMPANY •

A DIVISION OF IOWA STEEL FABRICATORS

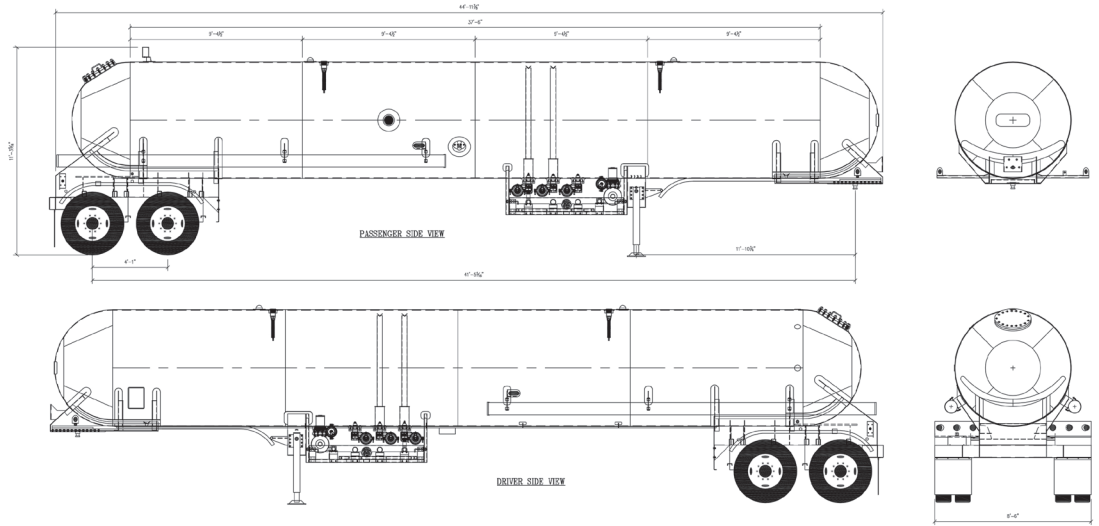
1525 E Eddy Saylor Pkwy | Osceola, IA 50213 | P 877.783.7739 | [sales@countrySIDETANK.com](mailto:sales@countrySIDETANK.com) | [www.countrySIDETANK.com](http://www.countrySIDETANK.com)

# MC-331 Transport Trailer

## CAPACITY: 9,600 GALLONS

- Estimated Weight: 20,360 lbs
- MAWP: 265 PSI @ -20F/125F degrees
- SA-517 Grade B shell and head steel
- SA-517 Grade E flange/manway steel
- Stainless or carbon steel subframes
- Constructed in accordance with ASME Section VIII, Division 1, D.O.T. specification MC-331, and NFPA 58
- Suspension: Hendrickson (customer may select any other option)
- 49" tandem axle spacing
- 77.5" Track
- 23,000 lb suspension rating
- Lift axle option
- Drum brake (standard) Disc brake option available
- (8) 11R22.5 and (8) Accuride or Alcoa aluminum wheels
- Wabco or Haldex 4S/2M ABS brake system

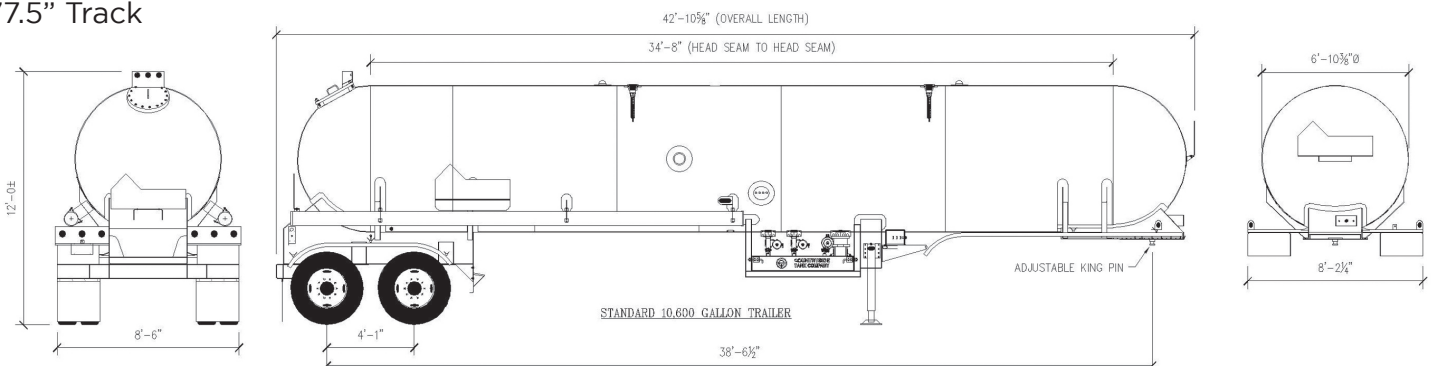
- Marshall Excelsior valves, ACME adapters and caps, and safety relief valves
- Jomar Ball Valves
- Corken or 4" Blackmer TLGLF-4 pump
- Gauges: Level gauges set at 83%, 85%, 86.5% and 90%, 4" MEC dial float gauge, -40 degrees to 120 degree MEC thermometer, 0-400 PSI MEC pressure gauge all installed in recess wells



## CAPACITY: 10,600 GALLONS

- Estimated Weight: 21,640 lbs (265 PSI) or 20,640 lbs (250 PSI)
- MAWP: 265 PSI or 250 PSIG @ -20F/125F degrees
- SA-517 Grade B shell and head steel
- SA-517 Grade E flange/manway steel
- Stainless or carbon steel subframes
- Constructed in accordance with ASME Section VIII, Division 1, D.O.T. specification MC-331, and NFPA 58
- Suspension: Hendrickson (customer may select any other option)
- 49" axle spacing
- Axles: (2)
- 77.5" Track

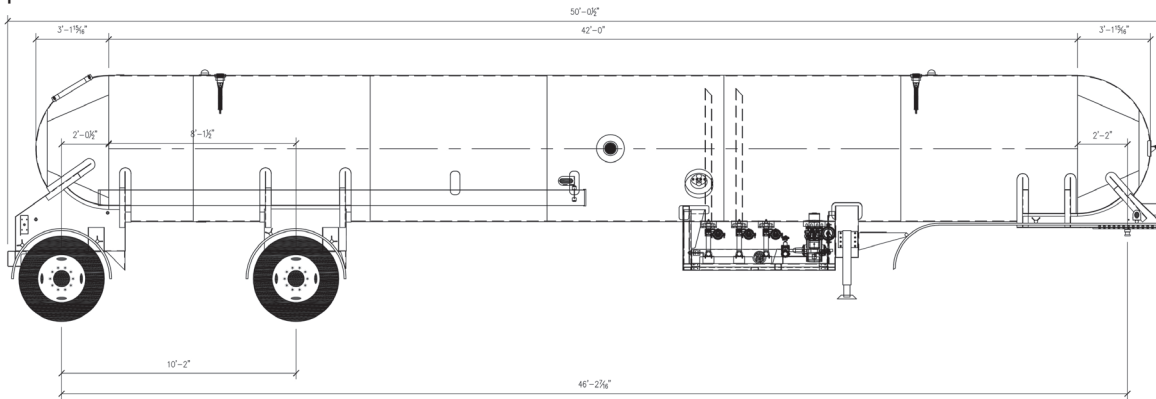
- 23,000 lb suspension rating
- Drum brake (standard) Disc brake option available
- Haldex 4S/2M ABS brake system
- (8) 11R22.5 tires and (8) 8.25 x 22.5 mill finish aluminum wheels
- Marshall Excelsior valves, ACME adapters and caps, and safety relief valves
- Jomar Ball Valves
- Corken or 4" Blackmer TLGLF-4 pump
- Gauges: Level gauges set at 83%, 85%, 87% and 90%, 4" MEC dial float gauge, -40 degF to 120 degF MEC thermometer, 0-400 PSI MEC pressure gauge all installed in recess wells



# MC-331 Transport Trailer

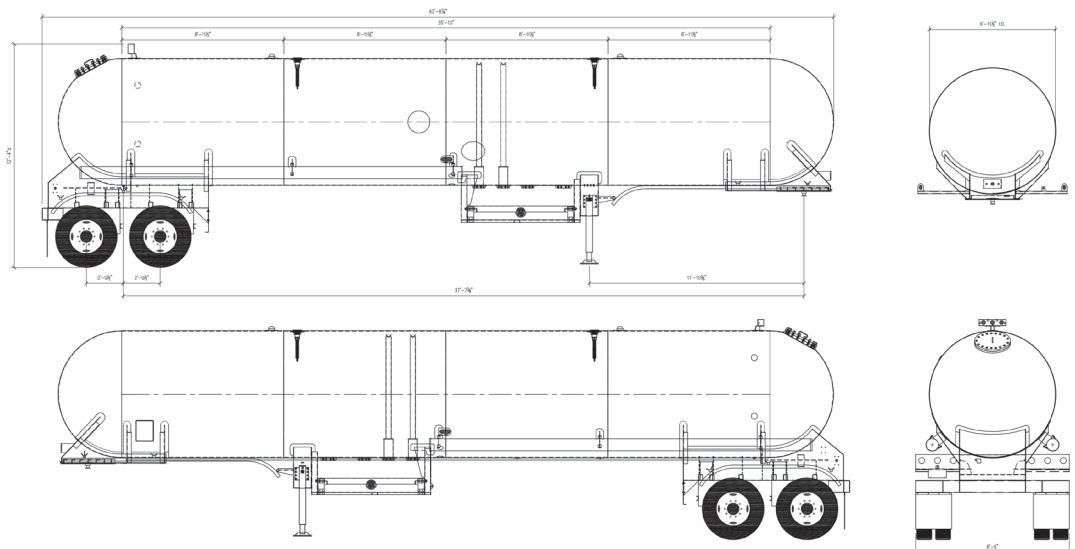
## CAPACITY: 10,600 GALLONS

- Estimated Weight: 22,500 lbs
- MAWP: 265 PSI @ -20F/125F degrees
- SA-517 Grade B shell and head steel
- SA-517 Grade E flange/manway steel
- Stainless or carbon steel subframe
- Constructed in accordance with ASME Section VIII, Division 1, D.O.T. specification MC-331, and NFPA 58
- Suspension: Hendrickson (customer may select any other option)
- 10' 2" tandem spread axle spacing
- 77.5" Track
- 23,000 lb suspension rating
- Lift axle option
- Drum brake (standard) Disc brake option available
- Wabco or Haldex 4S/2M ABS brake system
- (8) 11R22.5 Dunlop Tires and (8) Accuride or Alcoa aluminum wheels
- Marshall Excelsior valves, ACME adapters and caps, and safety relief valves
- Jomar Ball Valves
- Corken or 4" Blackmer TLGLF-4 pump
- Gauges: Level gauges set at 83%, 85%, 86.5% and 90%, 4" MEC dial float gauge, -40 degree to 120 degree MEC thermometer, 0-400 PSI MEC pressure gauge all installed in recess wells



## CAPACITY: 11,500 GALLONS

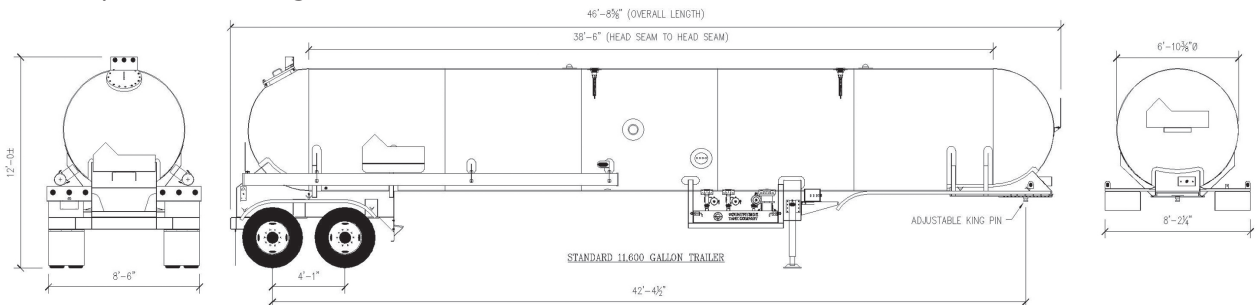
- Estimated Weight: 21,840 lbs
- MAWP: 250 PSI @ -20F/125F degrees
- SA-517 Grade B shell and head steel
- SA-517 Grade E flange/manway steel
- Stainless or carbon steel subframes
- Constructed in accordance with ASME Section VIII, Division 1, D.O.T. specification MC-331, and NFPA 58
- 49" tandem axle spacing
- 77.5" Track
- 23,000 lb suspension rating
- Lift axle option
- Suspension: Hendrickson (customer may select any other option)
- Drum brake (standard) Disc brake option available
- (8) 11R22.5 tires and (8) Accuride or Alcoa aluminum wheels
- Wabco or Haldex 4S/2M ABS Brake System
- 4" Blackmer TLGLF-4 pump
- Jomar Ball Valves
- Corken Marshall Excelsior valves, ACME adapters and caps, and safety relief valves
- Gauges: Level gauges set at 83%, 85%, 86.5% and 90%, 4" MEC dial float gauge, -40 degree to 120 degree MEC thermometer, 0-400 PSI MEC pressure gauge all installed in recess wells



# MC-331 Transport Trailer

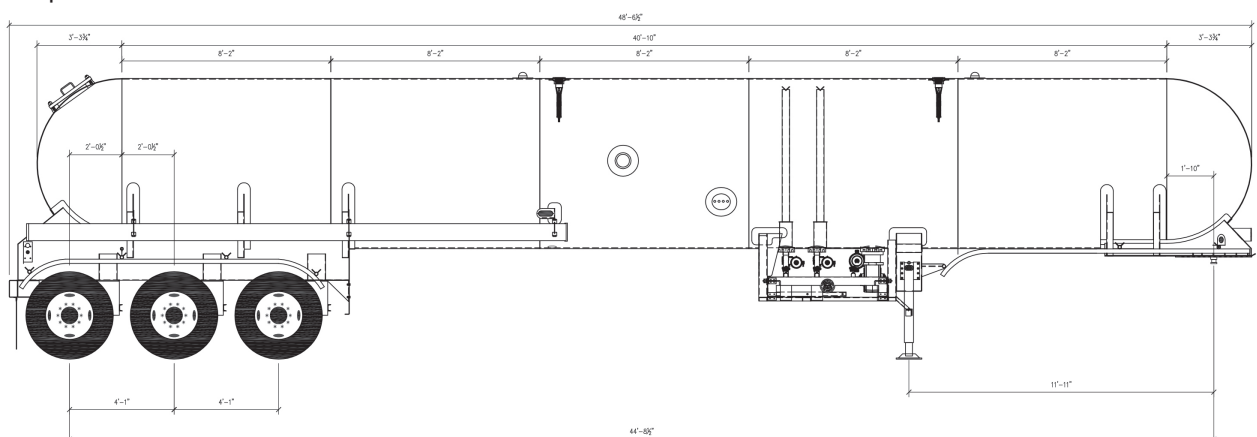
## CAPACITY: 11,600 GALLONS

- Estimated Weight: 21,900 lbs
- MAWP: 250 PSIG @ -20F/125F degrees
- SA-517 Grade B shell and head steel
- SA-517 Grade E flange/manway steel
- Stainless or carbon steel subframe
- Constructed in accordance with ASME Section VIII, Division 1, D.O.T. specification MC-331, and NFPA 58
- Suspension: Hendrickson (customer may select any other option)
- 49" tandem axle spacing
- Axles: (2)
- 77.5" Track
- 23,000 lb suspension rating
- Drum brake (standard) Disc brake option available
- Haldex 4S/2M ABS brake system
- (8) 11R22.5 Tires and (8) 8.25 x 22.5 mill finish aluminum wheels
- Marshall Excelsior valves, ACME adapters and caps, and safety relief valves
- Jomar Ball Valves
- Corken or 4" Blackmer TLGLF-4 pump
- Gauges: Level gauges set at 83%, 85%, 87% and 90%, 4" MEC dial float gauge, -40 degree to 120 degree MEC thermometer, 0-400 PSI MEC pressure gauge all installed in recess wells



## CAPACITY: 11,500 GALLONS

- Estimated Weight: 25,900 lbs
- MAWP: 265 PSI @ -20F/125F degrees
- SA-517 Grade B shell and head steel
- SA-517 Grade E flange/manway steel
- Stainless or carbon steel subframe
- Constructed in accordance with ASME Section VIII, Division 1, D.O.T. specification MC-331, and NFPA 58
- Suspension: Hendrickson (customer may select any other option)
- 49" - 72" tri-axle spacing
- 77.5" Track
- 23,000 lb suspension rating
- Lift axle option
- Drum brake (standard) Disc brake option available
- Wabco or Haldex 4S/2M ABS Brake System
- (12) 11R22.5 tires and (12) Accuride or Alcoa aluminum wheels
- Marshall Excelsior valves, ACME adapters and caps, and safety relief valves
- Jomar Ball Valves
- Corken or 4" Blackmer TLGLF-4 pump
- Gauges: Level gauges set at 83%, 85%, 86.5% and 90%, 4" MEC dial float gauge, -40 degree to 120 degree MEC thermometer, 0-400 PSI MEC pressure gauge all installed in recess wells

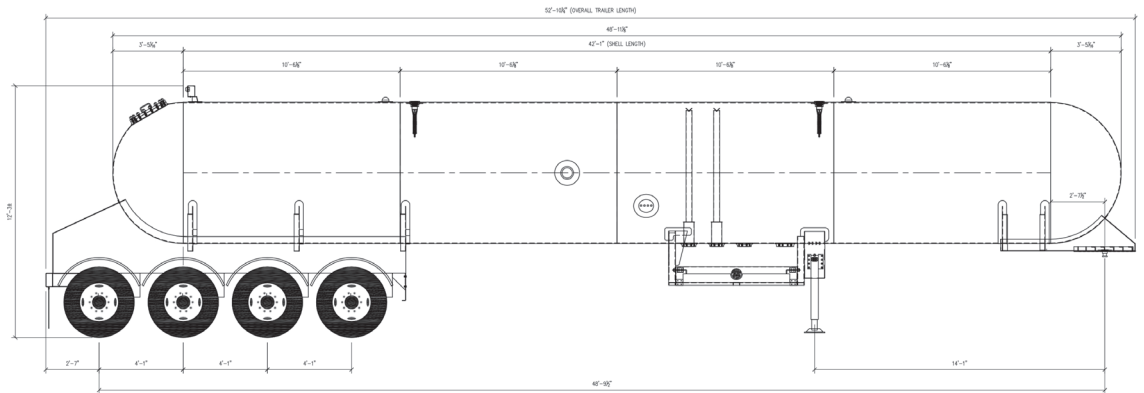




# MC-331 Transport Trailer

## CAPACITY: 12,600 GALLONS

- Estimated Weight: 26,250 lbs (250 PSI) or 27,650 lbs (265 PSI)
- MAWP: 265 PSI @ -20F/125F degrees
- SA-517 Grade B shell and head steel
- SA-517 Grade E flange/manway steel
- Stainless or carbon steel subframe
- Constructed in accordance with ASME Section VIII, Division 1, D.O.T. specification MC-331, and NFPA 58
- Suspension: Hendrickson (customer may select any other option)
- 49-60" tri-axle or quad axle spacing
- 77.5" Track
- 23,000 lb suspension rating
- Lift axle option
- Drum brake (standard) Disc brake option available
- Wabco or Haldex 4S/2M ABS brake

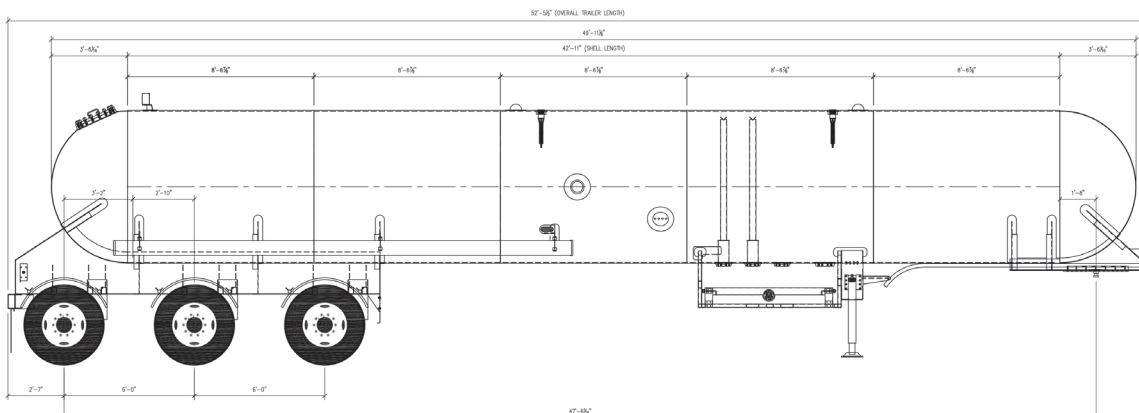


- system
- (12) 11R22.5 tires and (12) Accuride or Alcoa aluminum wheels
- Marshall Excelsior valves, ACME adapters and caps, and safety relief valves
- Jomar Ball Valves
- Corken or 4" Blackmer TLGLF-4 pump
- Gauges: Level gauges set at 83%, 85%, 86.5% and 90%, 4" MEC dial float gauge, -40 degree to 120 degree MEC thermometer, 0-400 PSI MEC pressure gauge all installed in recess wells

## CAPACITY: 13,500 GALLONS

- Estimated Weight tri-axle: 27,300 lbs (250 PSI) or 28,100 lbs (265 PSI)
- Estimated Weight quad axle: 29,510 lbs (250 PSI) or 30,100 lbs (265 PSI)
- MAWP: 265 PSI @ -20F/125F degrees
- SA-517 Grade B shell and head steel
- SA-517 Grade E flange/manway steel
- Stainless or carbon steel subframe
- Constructed in accordance with ASME Section VIII, Division 1, D.O.T. specification MC-331, and NFPA 58
- Suspension: Hendrickson (customer may select any other option)
- 49-72" tri-axle spacing
- 77.5" Track

- 23,000 lb suspension rating
- Lift axle option
- Drum brake (standard) Disc brake option available
- Wabco or Haldex 4S/2M ABS Brake System
- (12) 11R22.5 tires and (12) Accuride or Alcoa aluminum wheels
- Marshall Excelsior valves, ACME adapters and caps, and safety relief valves
- Jomar Ball Valves
- Corken or 4" Blackmer TLGLF-4 pump
- Gauges: Level gauges set at 83%, 85%, 86.5% and 90%, 4" MEC dial float gauge, -40 degree to 120 degree MEC thermometer, 0-400 PSI MEC pressure gauge all installed in recess wells



# MC-331 Transport Trailer

## CAPACITY: 15,200 GALLONS

- Estimated Weight: 29,500 lbs
- MAWP: 250 PSI @ -20F/125F degrees
- SA-517 Grade B shell and head steel
- SA-517 Grade E flange/manway steel
- Stainless or carbon steel subframe
- Constructed in accordance with ASME Section VIII, Division 1, D.O.T. specification MC-331, and NFPA 58
- Suspension: Hendrickson (customer may select any other option)
- 60-72" tri-axle spacing
- 77.5" Track
- 23,000 lb suspension rating (25,000 lb option available)
- Lift axle option
- Drum brake (standard) Disc brake option available
- Wabco or Haldex 4S/2M ABS brake system
- (12) 11R22.5 tires and (12) Accuride or Alcoa aluminum wheels
- Marshall Excelsior valves, ACME adapters and caps, and safety relief valves
- Jomar Ball Valves
- Corken or 4" Blackmer TLGLF-4 pump
- Gauges: Level gauges set at 83%, 85%, 86.5% and 90%, 4" MEC dial float gauge, -40 degree to 120 degree MEC thermometer, 0-400 PSI MEC pressure gauge all installed in recess wells

